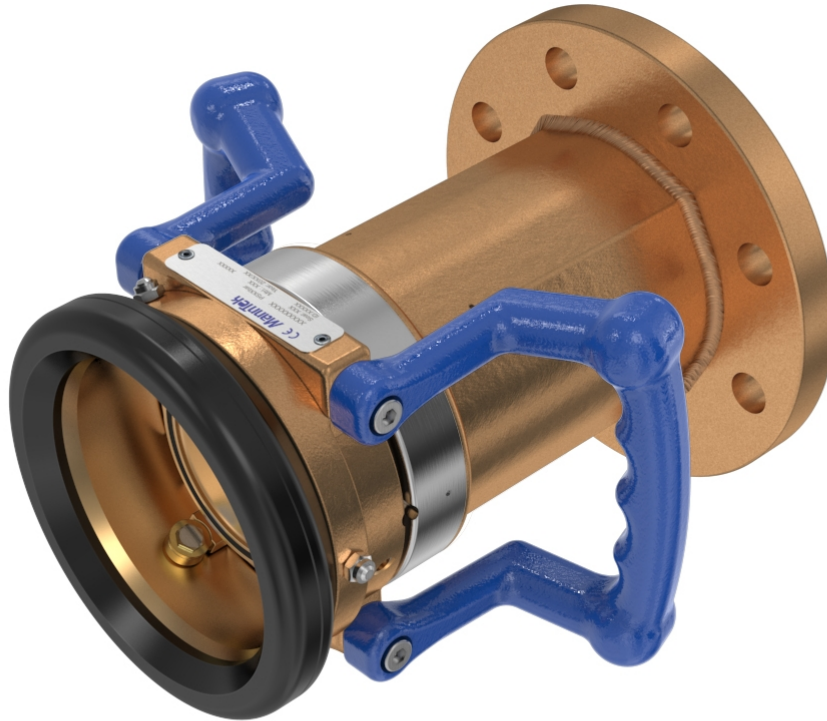


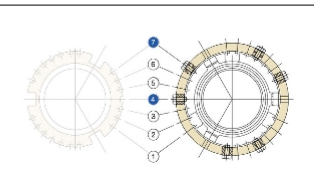
Part Number: S465B2202LD H-S4-11-L3BL /SEL47



+ Locking Device



+ SEL 47



[https://configurator.manntek.se/DDC/HOSEUNIT/4/BR/FLANGE/DIN28459TW1DN80\\_B/NBR/LD/H-S4-11-L3BL/WITH/212T47/A22/WITHOUT\\_F/Product14.html](https://configurator.manntek.se/DDC/HOSEUNIT/4/BR/FLANGE/DIN28459TW1DN80_B/NBR/LD/H-S4-11-L3BL/WITH/212T47/A22/WITHOUT_F/Product14.html)

### Product Group

#### Dry Disconnect Couplings

Quick and safe connection of hose assemblies and loading arms to mobile and stationary tanks, under pressure and with minimised liquid loss.

The standardised interface to STANAG 3756 with its bayonet coupling principle has been widely accepted in the industry. Both coupling parts are equipped with a flat poppet valve.

For the connection, the hose unit is pushed onto the tank unit and coupled / sealed by turning the coupler clockwise by 15 degrees. When the unit is turned by 100 degrees, the valves move into the tank unit so that the medium can flow. When a similar turn is made counter-clockwise, the flow is stopped and the coupler can be pulled off.

Certificates: DDC couplings fulfill the requirements of European Pressure Equipment Directive category 2 (for higher demand on request).

They are suitable for the use in potentially explosive atmosphere (ATEX) zone 1, approved for the transport of dangerous goods on road (ADR), by rail (RID) and by ship (IMDG), specified as a branch standard from European Chemical Industry (CEFIC) for handling of Ethylene Oxide/Propylene Oxide, Acrylic Monomers, Acrylonitrile, polymeric MDI/TDI and Vinyl Chloride.

TÜV TÜ.AGG 304-99, APRAGAZ File ref. 0302/P5832, Lloyd's Register 0038/  
ATEX/HAM064017,  
TDT-UW-21/16, EAC TC No. RU Д-SE.MЮ62.B.02151

### Type of Coupling

#### Female (Hose Unit, Coupler)

Self locking quick connect/disconnect coupling, to STANAG 3756, for liquid media. Hose unit with swivel, typically mounted on hose assemblies and loading arms for temporary connection to storage tanks and mobile transport units, for loading and unloading.

Quick and safe connection of hose assemblies and loading arms to mobile and stationary tanks, under pressure and with minimised liquid loss.

The standardised interface to STANAG 3756 with its bayonet coupling principle has been widely accepted in the industry. Both coupling parts are equipped with a flat poppet valve.

For the connection, the hose unit is pushed onto the tank unit and coupled / sealed by turning the coupler clockwise by 15 degrees. When the unit is turned by 100 degrees, the valves move into the tank unit so that the medium can flow. When a similar turn is made counter-clockwise, the flow is stopped and the coupler can be pulled off.

### Nominal Diameter / Socket Diameter

#### 3" (Ø 119 mm)

Similar to 2½", but where higher loading rates are required. Especially on rail tankers, marine tankers, ISO containers, Aviation fuel bunkering and related activities.

### Body Material

#### Gun Metal

Maximum Working Pressure 16 bar

Test Pressure 24 bar

Minimum Burst Pressure 80 bar

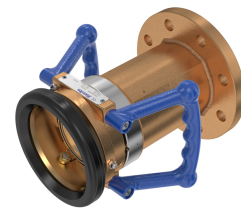
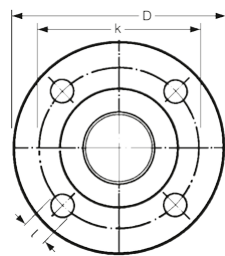
### Connection

#### Flanged Connection

### Connection Detail

#### DIN 28459 "TW 1" / DN 80

Dimension: D: (154 mm), k: (130 mm), 8 holes,  
l: (11,5 mm)



### O-Rings

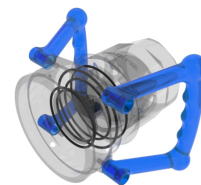
#### Nitrile (NBR)

NBR (Nitrile Butadiene Rubber) shows good mechanical properties.

The operating temperatures range between -30° C and +100° C (for a short period of time up to +120° C), depending on medium.

NBR is mostly used with mineral based oils and greases.

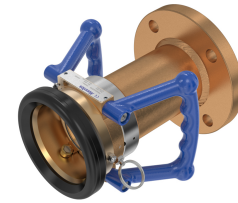
NBR is not suitable for ozone, ketones, esters, aldehydes, chlorinated and aromatic hydrocarbons.



### Options: Special Types

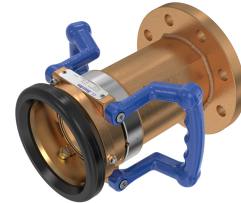
#### to Avoid Unwanted Disconnection

Option for hose units.  
Once coupled, the connection is automatically locked and can not loosen unintentionally.  
Pulling ring version LD-S2 or lever version L-S2.  
No modification on the tank unit is needed.



### Options: Handle

#### H-S4-11-L3BL

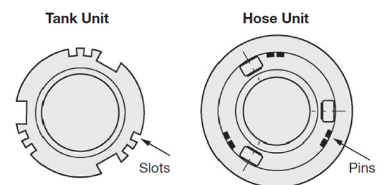


### Options: Selectivity

#### avoid mixing products

To avoid product contamination caused by connecting a hose unit to the wrong tank unit, selective versions of the hose and tank units are available.

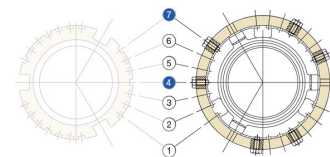
Each unit has a number of selective positions, designated by a coded part number according to the coupling size.



### Options: Selectivity System

#### SEL 47

During production hose units are fitted with pins and tank units are fitted with slots which exactly grip into each other. A wrong coupling can be excluded.



### Accessories

#### Without

### Contact Data:

Mann Teknik AB  
Strandvägen 16  
SE-542 31 Mariestad / Sweden  
Telefon: +46 501 39 32 00  
Telefax: +46 501 39 32 09  
E-Mail: [sales@manntek.se](mailto:sales@manntek.se)  
Internet: <http://www.manntek.se>