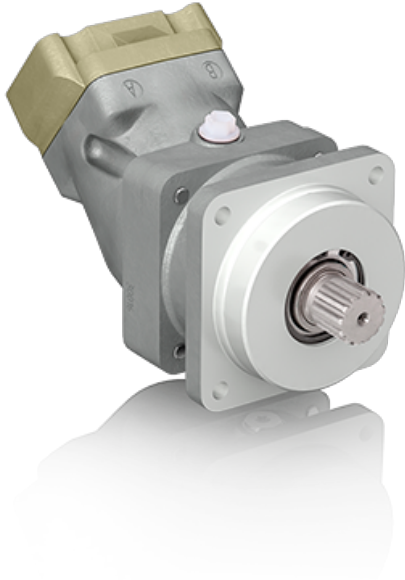


# PTO hydraulic motor Sunfab SCM-025



**Product codes:**

Reference:  
PC431-00022  
EAN13: -  
UPC: -

**Product attributes:**

**Product description:**

PTO hydraulic motors from Sunfab are perfect for hydraulically-driven centrifugal pump on refuellers. Carefully check that this model SCM-025W/H-I4D/G-K25-P1 fits your needs based on the technical documentation below. If you need another configuration, please, feel free to ask @ [welcome@reds-mro.com](mailto:welcome@reds-mro.com) or with your privileged sales representative.

SCM 010-130 ISO is a range of robust axial piston motors especially suitable for mobile hydraulics. SCM 010-130 ISO is of the bent-axis type with spherical pistons. The design results in a compact motor with few moving parts, high starting torque and high reliability. It covers the entire displacement range 10-130 cm<sup>3</sup>/rev. at a maximum pressure of 400 bar. It's well dimensioned, double tapered roller bearings permit high shaft loads and lead to excellent speed characteristics. The motor's high level of reliability is based on the choice of materials, hardening methods, surface structures and the quality assured manufacturing process.

**ADVANTAGES:**

- High maximum speed
- Smooth operation over the entire speed range

- Available in many different configurations of shafts and connections
- High efficiency
- Speed sensor available as option
- Suitable for applications with high angular accelerations due to its high rotary stiffness